



**FOR LEASE**

**26711 NORTHWESTERN HWY**  
**SOUTHFIELD, MI 48033**



\$16.95 SF/yr



± 137,476 SF



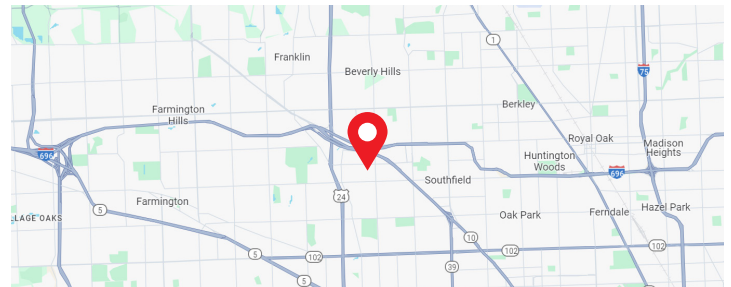
± 6.49 AC



571 Spaces

**PROPERTY HIGHLIGHTS**

- 137,476 SF office/hi-tech building
- Major interior and exterior renovations completed
- Full service café and sundry shop located on the 1st floor
- Brand new building conference facilities available at no charge to tenants
- 46,000 SF contiguous space available - two full floors
- Highly visible building façade signage available to larger users
- Abundant surface parking available
- Easy access to I-696, US-10, Southfield Expressway & Telegraph Rd



**FOR MORE INFO: 248.324.2000**

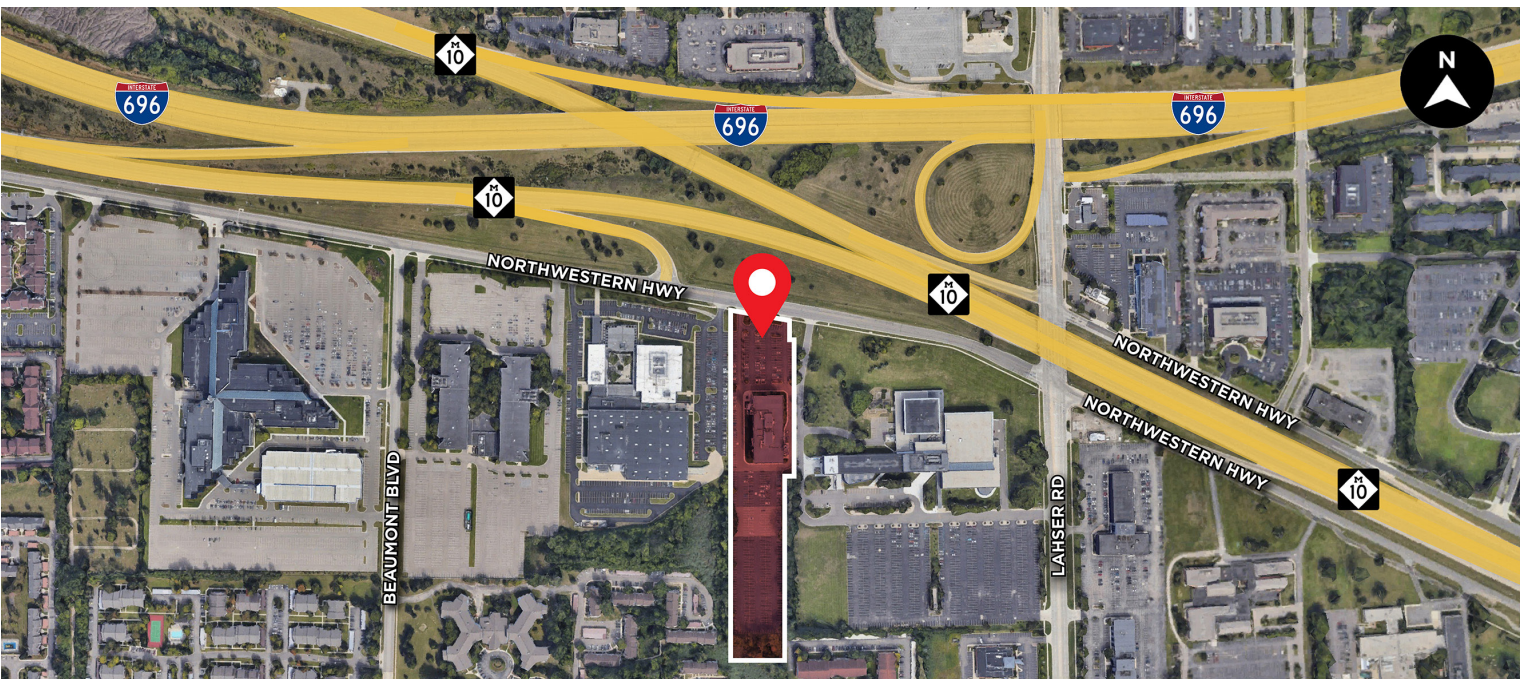


**JORDAN FRIEDMAN**  
JORDAN.FRIEDMAN@FREG.COM

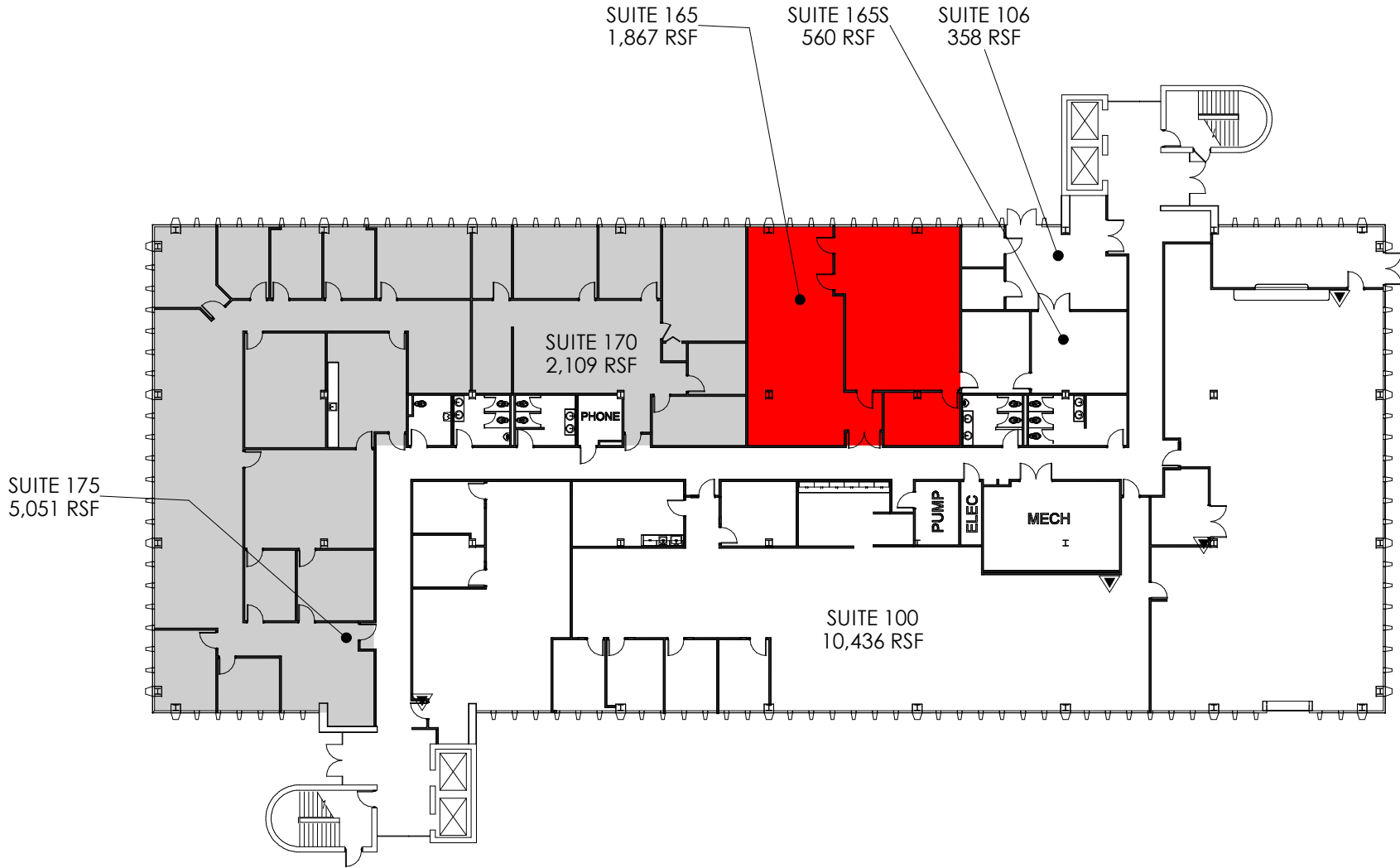


**ROBERT GAGNIUK**  
ROBERT.GAGNIUK@FREG.COM

The information provided herein along with any attachment(s) was obtained from sources believed to be reliable, however, Friedman Real Estate makes no guarantees, warranties, or representations as to the completeness or accuracy of such information and legal counsel is advised. All information provided is subject to verification and no liability for reliance on such information or errors or omissions is assumed. The presentation of this property is submitted subject to errors, omissions, change of price or conditions, prior sale or lease, or withdrawal without notice. Copyright © 2024 Friedman Real Estate. All rights reserved.



2/12/2024 12:17:53 PM



■ AMENITIES  
■ AVAILABLE

DO NOT SCALE

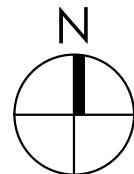


34975 W. 12 MILE ROAD FARMINGTON HILLS, MI 48331  
PHONE: 248-324-2000 // FAX: 248-324-9238  
WWW.FRIEDMANREALESTATE.COM

26711  
NORTHWESTERN HWY.  
SOUTHFIELD, MI

1ST FLOOR

FOR DETAILS PLEASE CALL:  
248-324-2000





 AMENITIES

DO NOT SCALE

File: 2ND\_26711Northwestern.dwg  
 Date: AUGUST 15, 2023  
 Time: 16:03:28



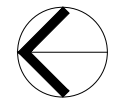
34975 W. Twelve Mile Road  
 Farmington Hills, MI 48331  
 Phone: 248.324.2030 Fax: 248.324.9238  
 Web: www.friedmanrealestate.com

# 26711 NORTHWESTERN HWY

SOUTHFIELD, MI

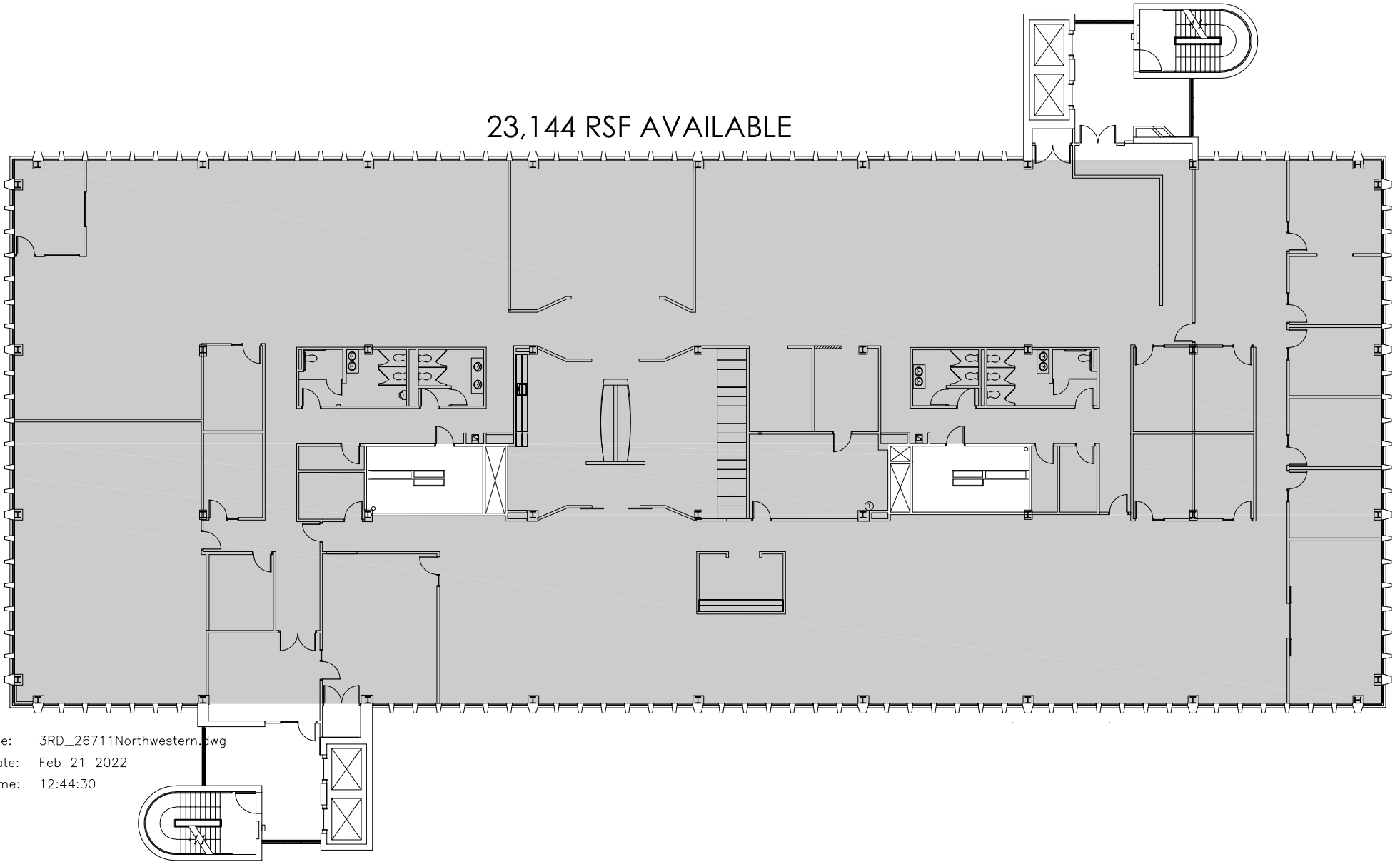
## 2ND FLOOR

FOR DETAILS PLEASE CALL  
 248-324-2000



NORTH

23,144 RSF AVAILABLE



File: 3RD\_26711Northwestern.dwg

Date: Feb 21 2022

Time: 12:44:30

DO NOT SCALE



**FRIEDMAN**  
REAL ESTATE >>>

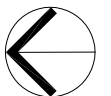
34975 W. Twelve Mile Road  
Farmington Hills, MI 48331  
Phone: 248.324.2000 Fax: 248.324.9238  
Web: www.friedmanrealestate.com

26711 NORTHWESTERN HWY

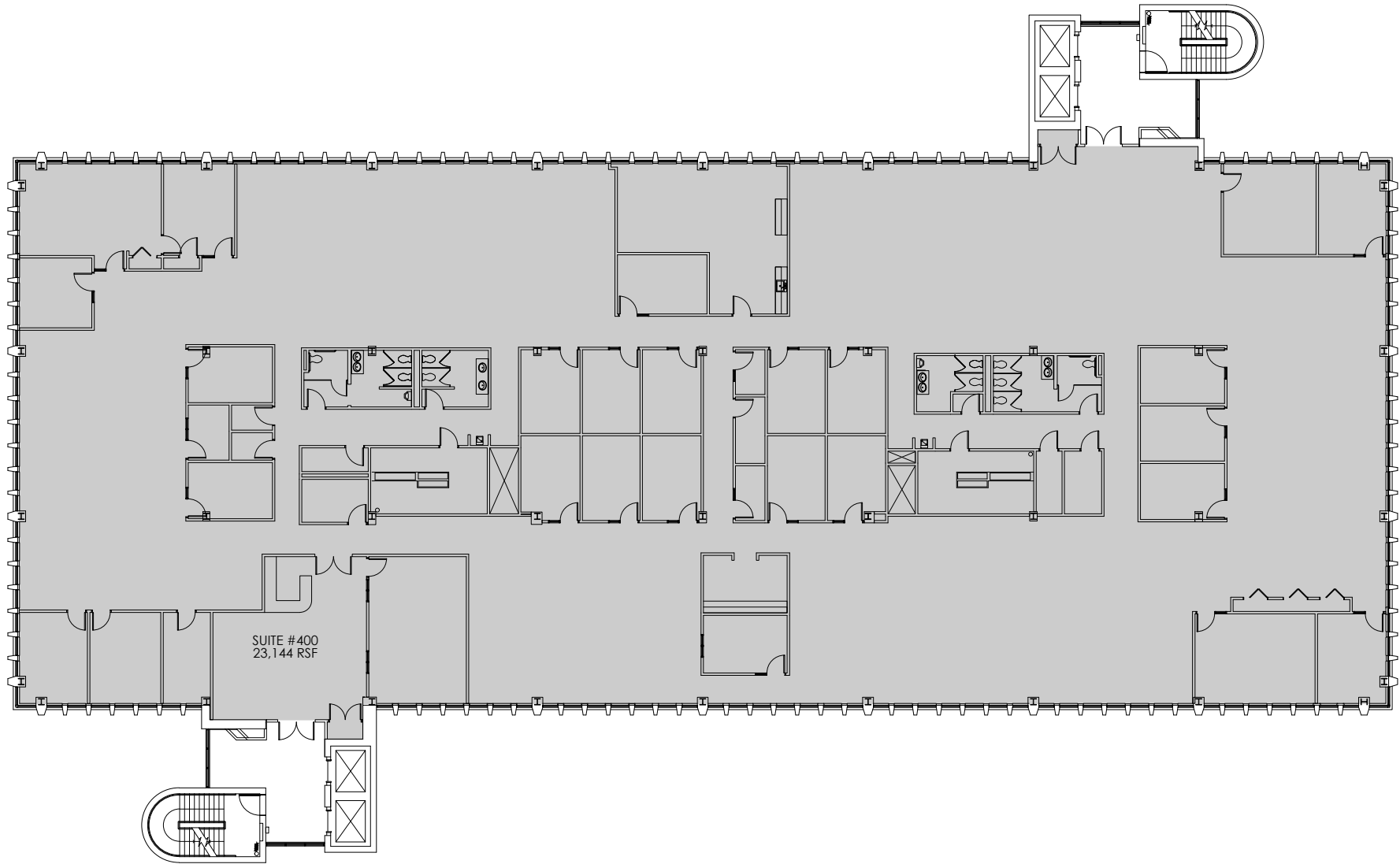
SOUTHFIELD, MI

3RD FLOOR

248-324-2000



NORTH



SUITE #400  
23,144 RSF

File: 4TH\_26711Northwestern.dwg

Date: MAY 16, 2023

Time: 11:41:10

DO NOT SCALE



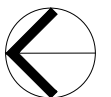
34975 W. Twelve Mile Road  
Farmington Hills, MI 48331  
Phone: 248.324.2030 Fax: 248.324.9238  
Web: [www.friedmanrealestate.com](http://www.friedmanrealestate.com)

26711 NORTHWESTERN HWY

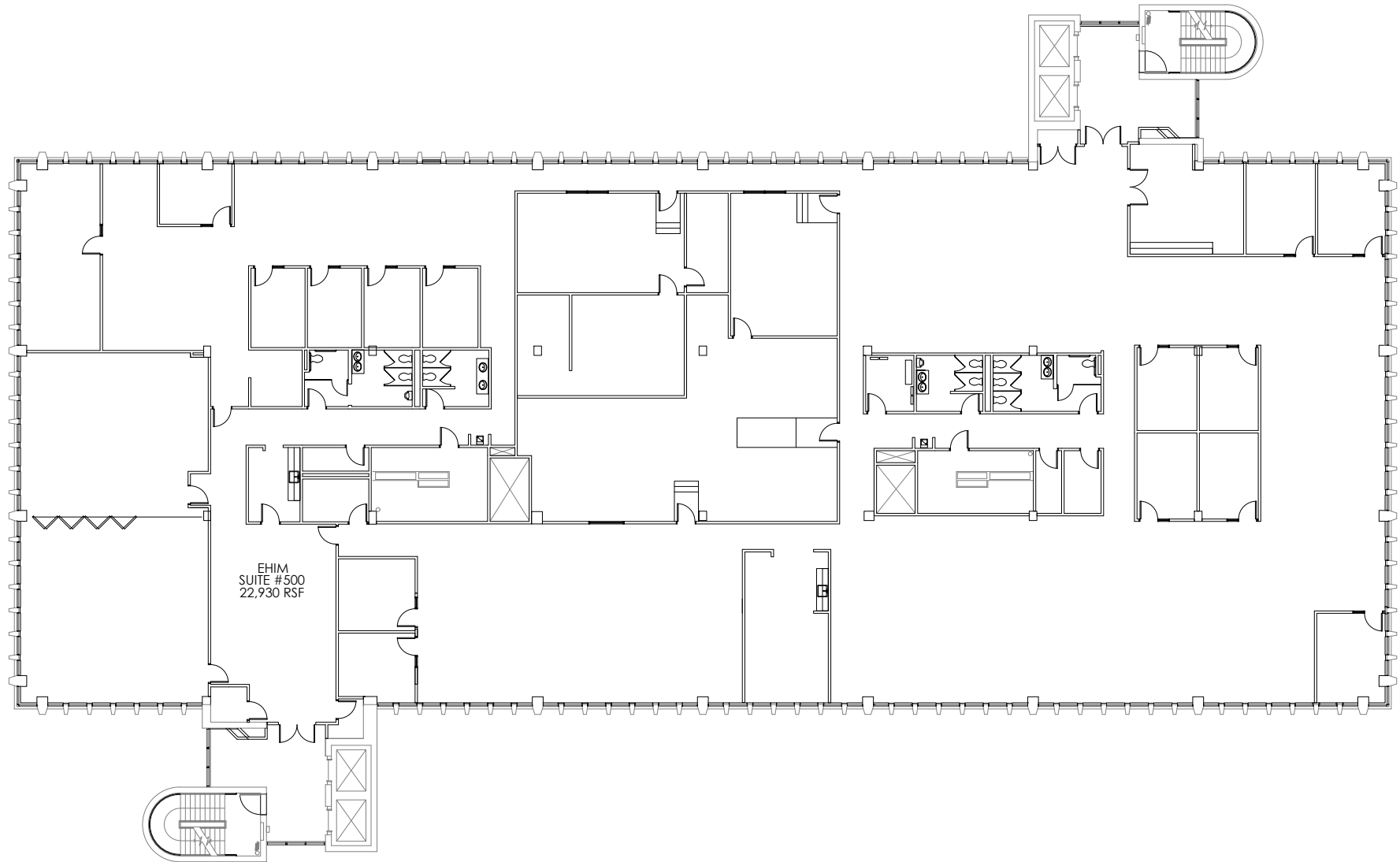
SOUTHFIELD, MI

4TH FLOOR

FOR DETAILS PLEASE CALL  
248-324-2000



NORTH



File: 5TH\_26711Northwestern.dwg

Date: Nov. 27 2018

Time: 10:16:46

DO NOT SCALE



34975 W. Twelve Mile Road  
Farmington Hills, MI 48331  
Phone: 248.324.2030 Fax: 248.324.9238  
Web: www.friedmanrealestate.com

26711 NORTHWESTERN HWY

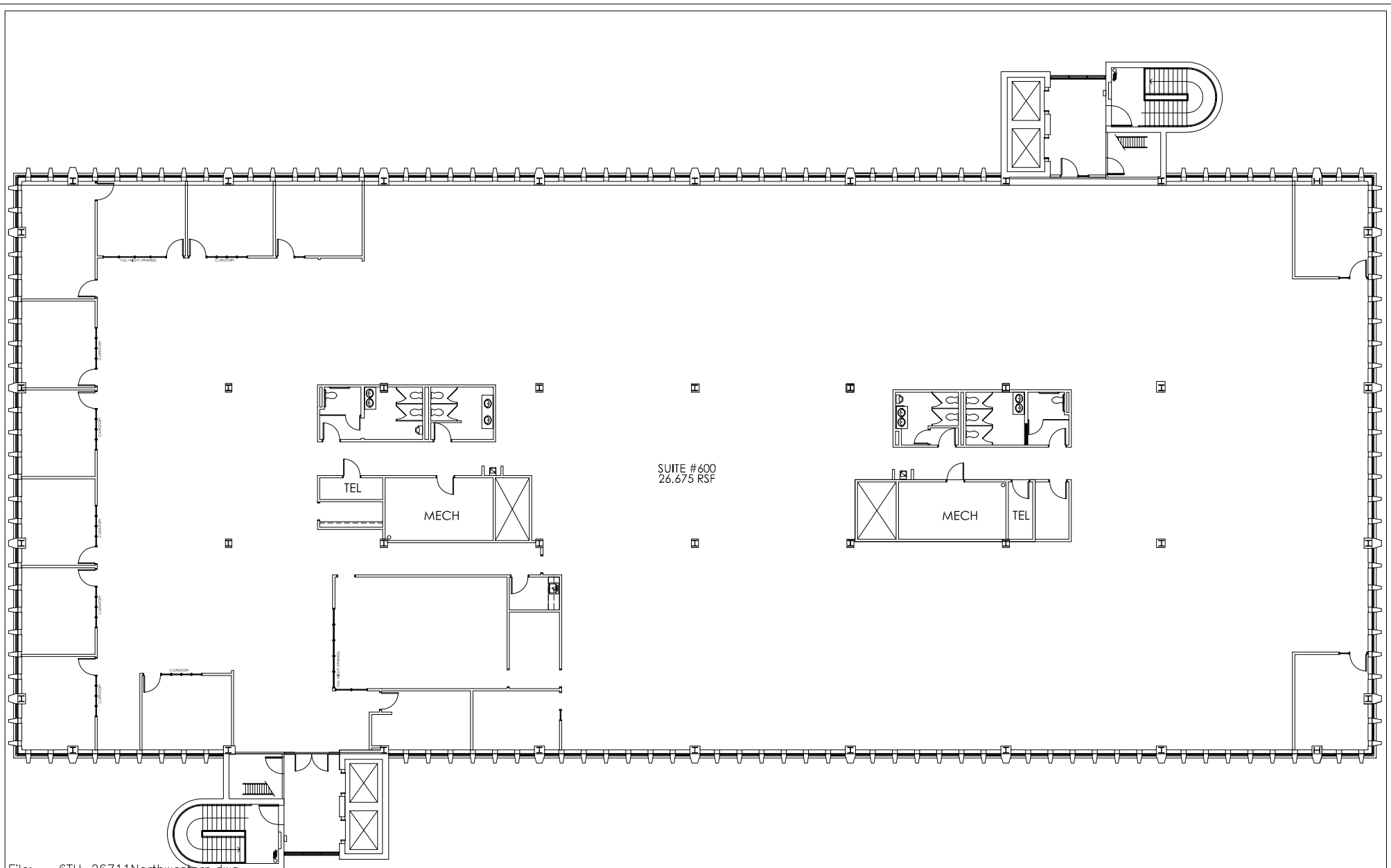
SOUTHFIELD, MI

5TH FLOOR

FOR DETAILS PLEASE CALL  
248-324-2000



NORTH



File: 6TH\_26711Northwestern.dwg  
 Date: Aug 19 2019  
 Time: 15:16:45

DO NOT SCALE

**FRIEDMAN**  
 REAL ESTATE 

34975 W. Twelve Mile Road  
 Farmington Hills, MI 48331  
 Phone: 248.324.2030 Fax: 248.324.9238  
 Web: www.friedmanrealestate.com

26711 NORTHWESTERN HWY

SOUTHFIELD, MI

6TH FLOOR

FOR DETAILS PLEASE CALL  
 248-324-2000

